

## **Tyne Gordon**

### ***Desert Rose***

13 June – 2 August 2026

*Desert Rose* is a solo exhibition by Tyne Gordon that has developed from research into disused municipal buildings. Through patterns, objects and narratives contained in sites like racecourses and hospitals, Gordon produces new surfaces that reveal the social values embedded in such places. Following architectural and material cues, *Desert Rose* alters the gallery as speculation on the psychic afterlife of civic infrastructure.

Central to the exhibition is *Untitled (panels)*, a unit constructed from nine panels of Gib board. With its familiarity as a building material only partially legible, it is an inverted encounter with the corridors typical of schools, wards or other state departments. The top layer of paper has been removed to refocus on the dry mineral quality of the gypsum that is used in the manufacturing process.

In Charlotte Perkins Gilman's 1892 story *The Yellow Wallpaper*, an account of the narrator's period of summer bedrest in a mansion, the wallpaper decorating the bedroom becomes animated, seemingly moving and changing before her eyes. The

narrator is convinced a horde of women are behind the wallpaper shaking it. This enters the writing as a textual pattern through the reiteration of these preoccupying thoughts throughout the story. *Untitled (panels)* is a record of Gordon's repeated motion that likewise insists on meaning produced by obsession and return to the same surface in order to validate one's perception of what exists there. Gilman's character's nervous depression and her dwelling on the corrupted wallpaper patterning establishes actual interior space as a symbolic extension of the interior self.

The marks produced by Gordon's scraping are a reminder of the ornate motifs of Victorian architecture that persisted even in civic buildings. Site visits by the artist to Ōtepoti and nearby townships established as colonial settlements during the Victorian era built up an index of floral, spatial and literary imagery also revealed in the suite of paintings in *Desert Rose*. These motifs are linked to a corresponding set of colonial values and taste underpinning definitions of health or correctness.

*Desert Rose* attends to the psychological and historical energy released once institutional sites disappear. The title makes reference to the gypsum deposits that form when water evaporates from shallow basins, leaving a flower-like crystal as a keeper of the accumulated mineral.

Moving from enclosure to surface to exposure, the exhibition considers the conventions that continue to influence social orderliness through design.

**Tyne Gordon** is an artist living in Ōtautahi. She graduated with a BFA (Honours) from Ilam School of Fine Arts, Canterbury University in 2015. Recent exhibitions include *Spring Time is Heart-break: Contemporary Art in Aotearoa* (Christchurch Art Gallery Te Puna o Waiwhetū, 2023-24); *Silo* (Jonathan Smart Gallery, 2023), *Sourdust* (Jhana Millers Gallery, 2022) and *Visitor* (CoCA Toi Moroki, 2019). Tyne was the recipient of the Olivia Spencer Bower residency in 2018.

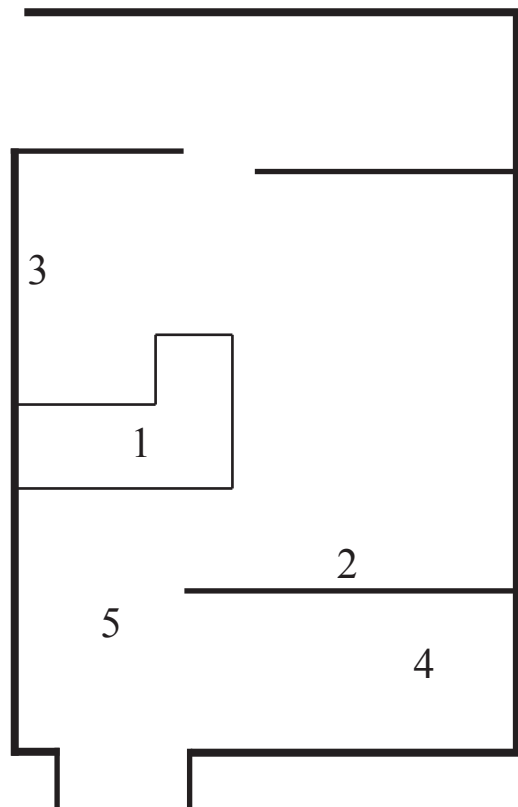
### **Maxine Funke**

#### ***At Hilltop House***

13 June – 2 August 2026

- a. macrocarpa march
- b. at hilltop house
- c. bay window

**Maxine Funke** is a minimal folk/experimental artist. She spends most of her life working as a security guard in Ōtepoti. When she has spare time she writes and records albums, a project spanning over twenty years. She has four cats and is chipping away at a degree in theology. She has released albums on Naarm labels Brierfield Flood Press and A Colourful Storm as well as Disciples and World of Echo abroad.



1. Tyne Gordon, *Untitled (panels)*, 2026. Gib board.

2. Tyne Gordon, *Untitled (windows)*, 2026. Oil on mild steel, three panels.

3. Tyne Gordon, *Untitled (pattern)*, 2026. Oil on mild steel, two panels.

4. Tyne Gordon, *Untitled (pillows)*, 2026. Cast plaster.

5. Maxine Funke, *At Hilltop House*, 2026. Three-part composition, 14:14 mins.

With thanks to Gordon and Howard at Winstone Wallboards Ltd for their donation of Gib, and Ollie Roake and Tim McCarthy for technician support!