

Packing and taking care of artworks



Lydia Baxendell, Kaitiaki Kohinga Toi | UC Art Collections Curator
lydia.Baxendell@Canterbury.ac.nz

Credits



Notes taken from:

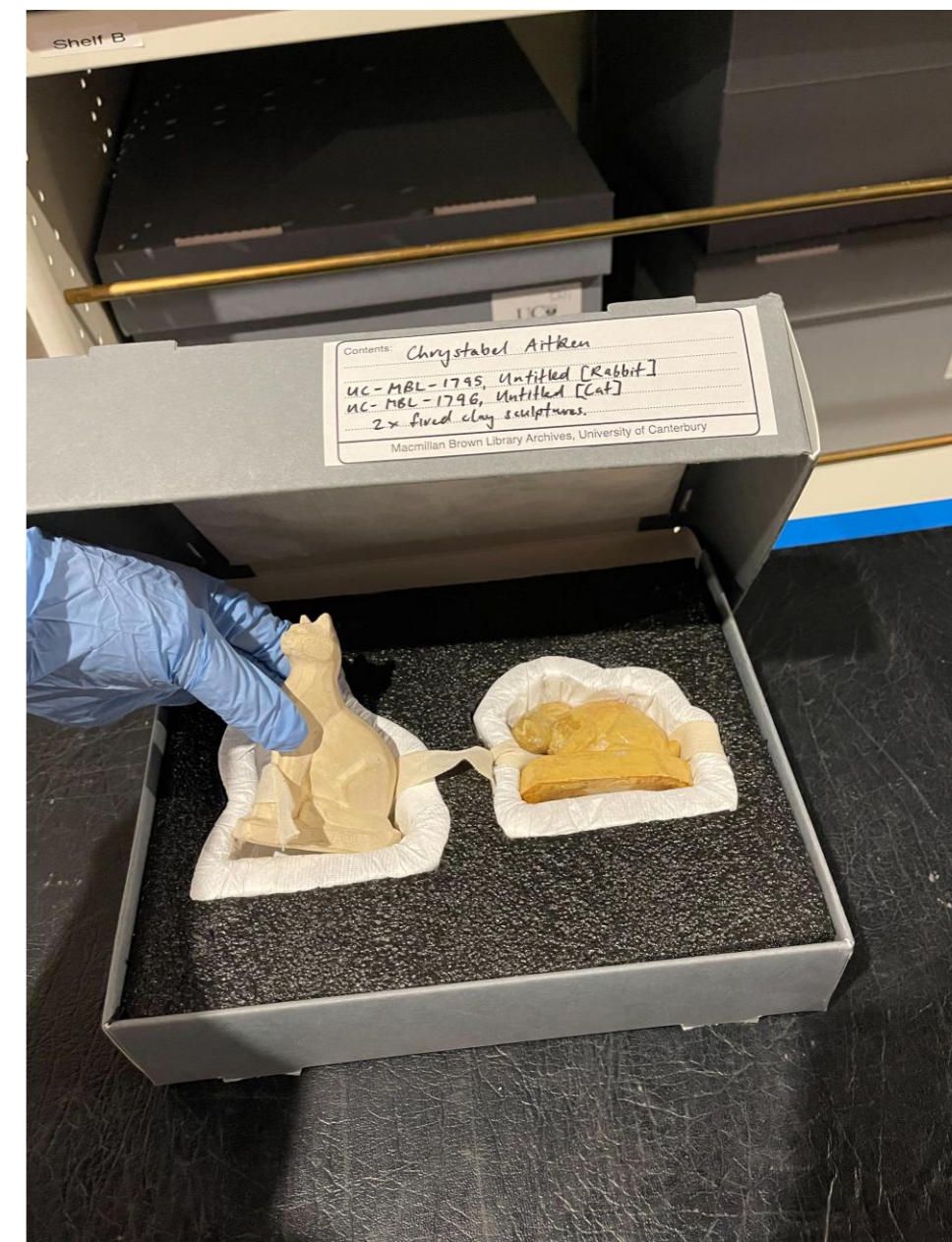
- ***reCollections : Caring for Collections Across Australia, Heritage Collections Council:***
<https://aiccm.org.au/conservation/collection-care/>
- ***National Services Te Paerangi:***
<https://www.tepapa.govt.nz/learn/for-museums-and-galleries/how-guides>

The University of Canterbury Art Collection



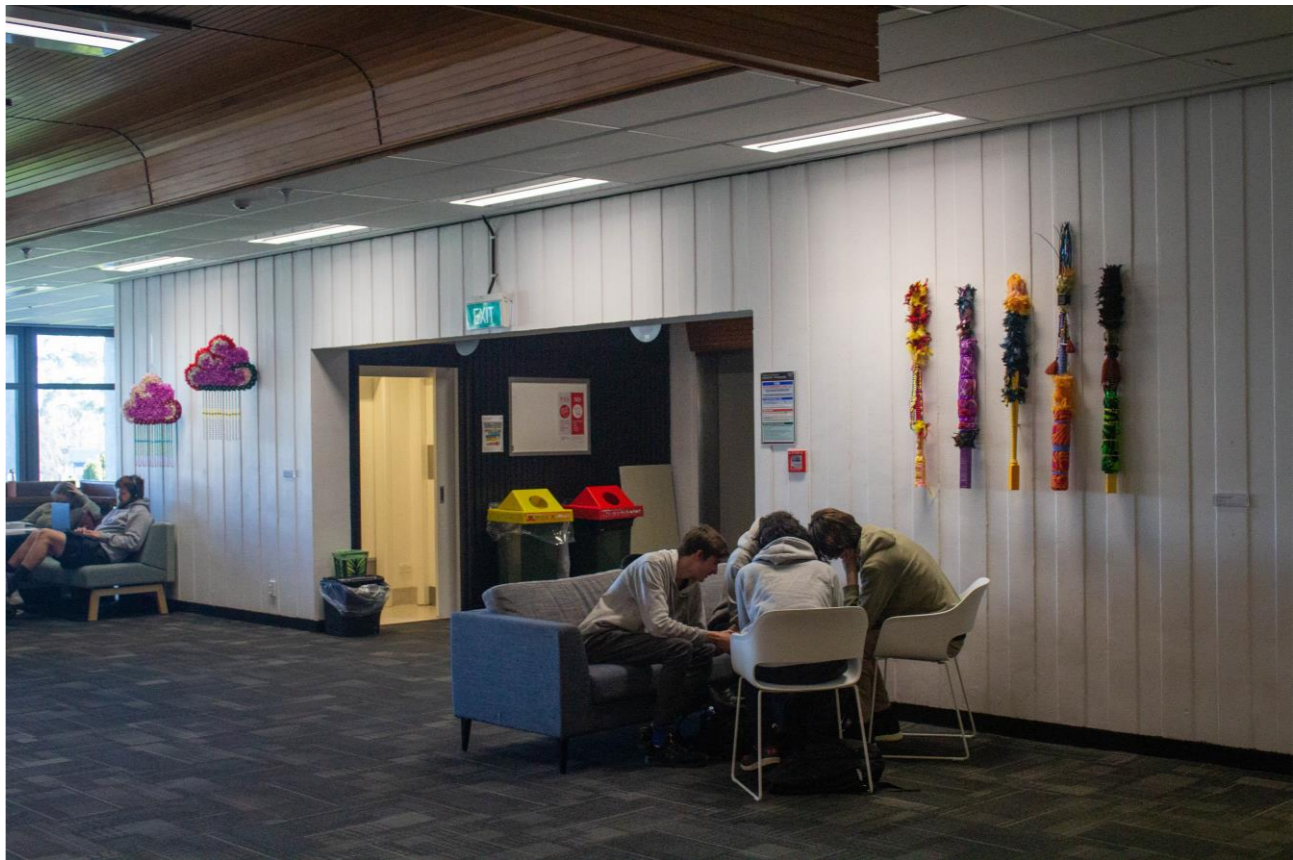
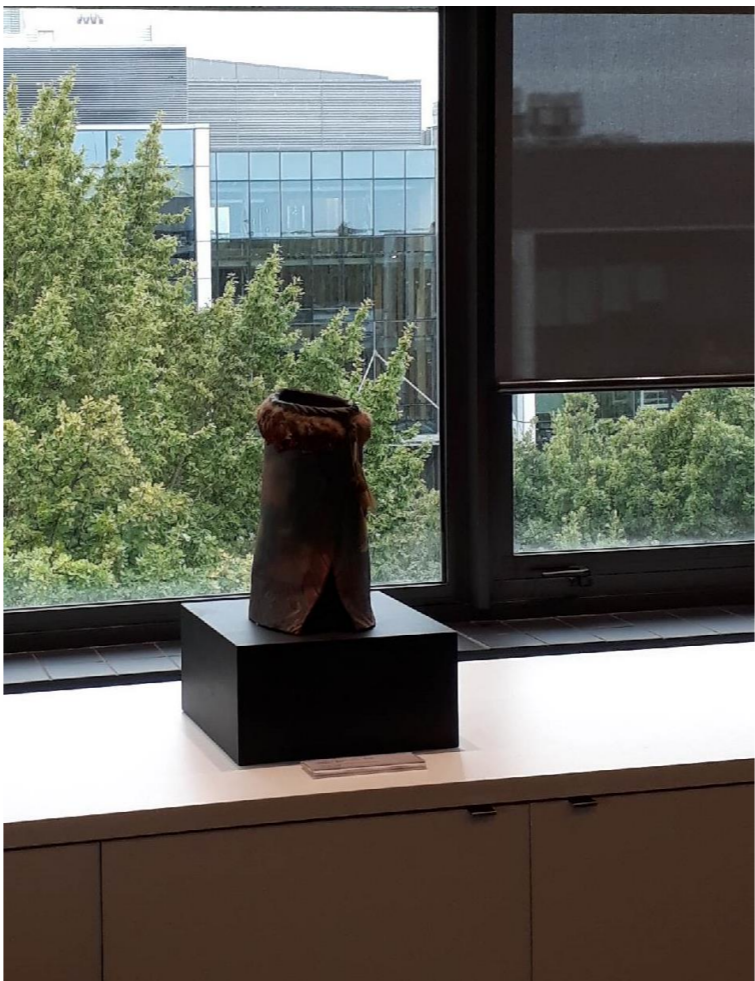
Connecting people with knowledge
Tuia te tangata ki te mātauranga

The University of Canterbury Art Collection



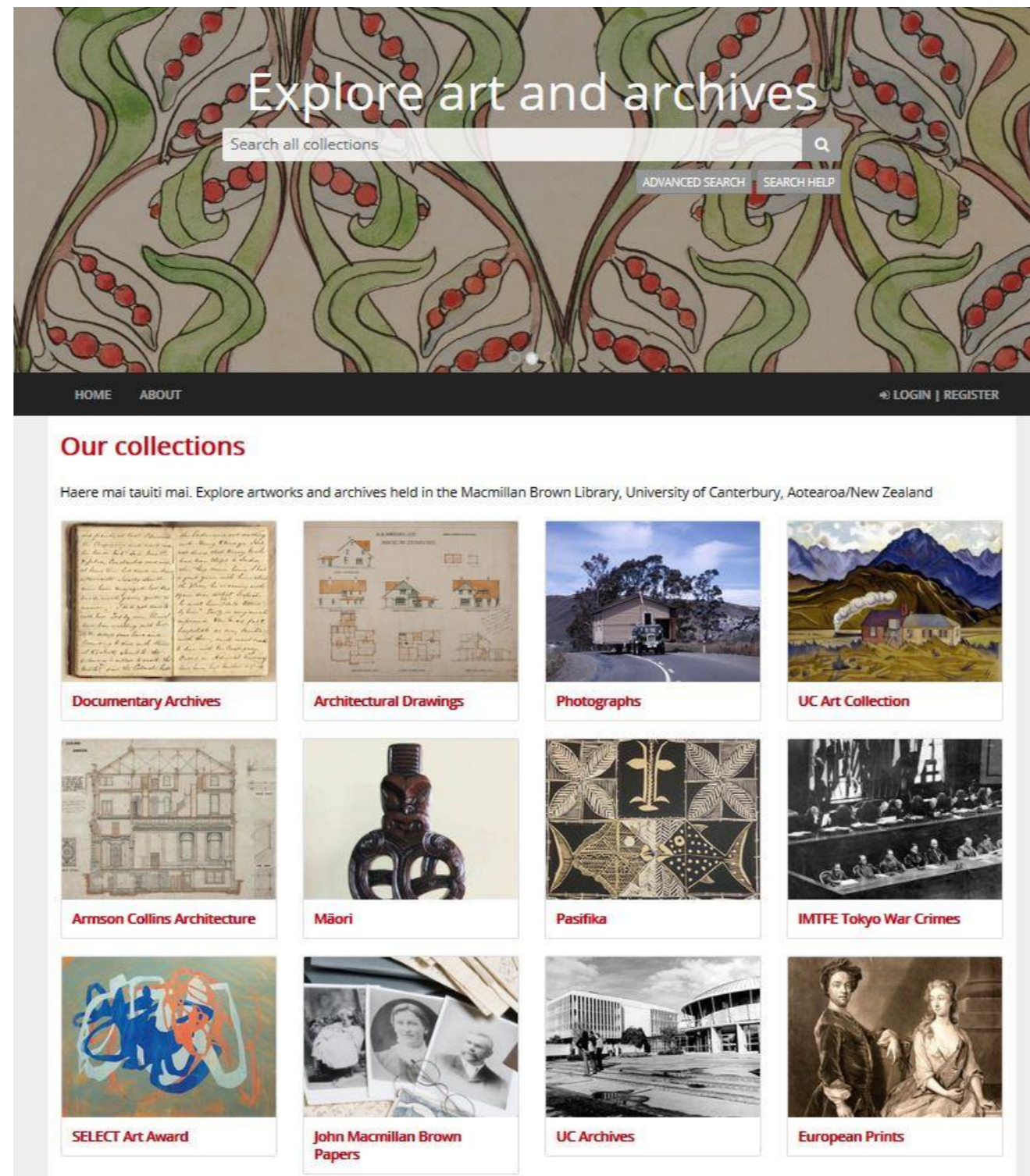
The University of Canterbury Art Collection

On campus



Connecting people with knowledge
Tuia te tangata ki te mātauranga

Online access: www.kohika.canterbury.ac.nz



Explore art and archives

Search all collections

ADVANCED SEARCH SEARCH HELP

HOME ABOUT LOGIN REGISTER

Our collections

Haere mai tauti mai. Explore artworks and archives held in the Macmillan Brown Library, University of Canterbury, Aotearoa/New Zealand

- Documentary Archives
- Architectural Drawings
- Photographs
- UC Art Collection
- Armson Collins Architecture
- Māori
- Pasifika
- IMTFF Tokyo War Crimes
- SELECT Art Award
- John Macmillan Brown Papers
- UC Archives
- European Prints

Storage: Major causes of damage

LIGHT



PEOPLE

TEMPERATURE

Ideal 18-22 degrees

HUMIDITY

POLLUTANTS

- Dust
- Gases

PESTS



Carpet beetles	Wool, fur, hair, feathers, silk, insect specimens, books.
Dry timber borers	Dried wood.
Furniture beetle	The sapwood of softwoods; will infest some hardwoods.
Common clothes moths	Wool, fur, hair, silk, dead insects, horn and feathers.
Casemaking clothes moths	Wool, fur, hair, silk, dead insects, horn and feathers.
Cockroaches	Cockroaches will eat just about anything, including leather, hair, skins, paper and books. They also cause damage through regurgitation or by gluing their egg-cases onto objects.
Psocids—booklice	Booklice feed mostly on mould growing on old books or dead insects, but they can also damage the surface of materials.
Silverfish	Paper, fabrics—starched or stained material especially—cotton, linen, photographs, book bindings and paste or sizes.
Rodents	Rats and mice can cause extensive damage to collections, through feeding—gnawing on materials—and through stains from their droppings. Their nests can also become infested with insects.
Birds	Bird droppings can damage collections; their nests can also lead to insect problems.

**SEEK THE ADVICE OF A PROFESSIONAL CONSERVATOR
BEFORE CLEANING, FUMIGATING OR TREATING YOUR
ART WORK IN ANY WAY**

**PŪ MANAAKI KAHURANGI | NEW ZEALAND
CONSERVATORS OF CULTURAL MATERIALS**

<https://www.nzccm.org.nz/>

Thank you!



Lydia Baxendell, Kaitiaki Kohinga Toi | UC Art Collections Curator
lydia.Baxendell@Canterbury.ac.nz