

Domino Domino

**Daniel Shaskey, Luke Shaw, and
Phoebe Hinchliff**

20 May – 5 July 2020

**THE
PHYSICS
ROOM** CONTEMPORARY ART SPACE

Domino Domino

Daniel Shaskey, Luke Shaw, and Phoebe Hinchliff

Exhibition runs: Wednesday 20 May – Sunday 5 July 2020

Public programmes to be announced

Domino Domino builds on the contributions of Daniel Shaskey, Luke Shaw, and Phoebe Hinchliff to *Sympathetic Resonance* at The Suter Art Gallery Te Aratoi o Whakatū, Nelson.

Each of the artists has a practice that involves recording or documentation with a focus on the transmissive qualities of various media. In this exhibition of new work, the artists are working from, and beyond, the initial provocation to reject time and space as a limitation on producing and creating. The resulting work employs publishing, moving image practice, tactics of architectural re-arrangement, and sound performance in order to layer and blur exhibition histories and locations.

Sympathetic Resonance was curated by Sarah McClintock and ran between October 2019 and February 2020.

Graduating with a BFA from the Ilam School of Fine Arts in 2018, **Daniel Shaskey** is a Ōtautahi-based designer and artists' publisher. Daniel's practice walks an intersection of disciplines amongst art, design, craft and literature to produce books that explore ideas around virtuality, physicality, speculation and cybernetics. Taking a particular interest in our relationships to objects and their relationships to us; each book itself having a specific relationship with its reader.

Based in Canterbury, **Phoebe Hinchliff** completed a BFA(Hons) at the Ilam School of Fine Arts in 2019. Her research-based practice and fieldwork is currently concerned with investigating the connections between bodies, both human and landforms, and the relationship language has with the land. She was a finalist for ZAF AA19 and ZAF AA20. This year she is a recipient of the Ethel Susan Jones Fine Arts Travelling Scholarship.

Luke Shaw is a sound artist based in Ōtautahi. He completed his BFA(Hons) in 2018 and has since begun his MFA at the Ilam School of Fine Arts. His current research focuses on the expressive potentialities for cinema when it is rethought as a primarily audible medium. He is also one half of the inconsistent guitar history duo The Opawa 45s.

Domino Domino

Daniel Shaskey, Luke Shaw, and Phoebe Hinchliff

WORKS LIST:

- 1 Luke Shaw
Metal Body: Ghost Field
Recorded at The Suter Art Gallery Te Aratoi o Whakatū, Nelson
on 26 February, 2020
Looped sound

- 2 Phoebe Hinchliff
Mush Zone II
2020
Double channel moving image and parallel apertures
3 min 31 secs

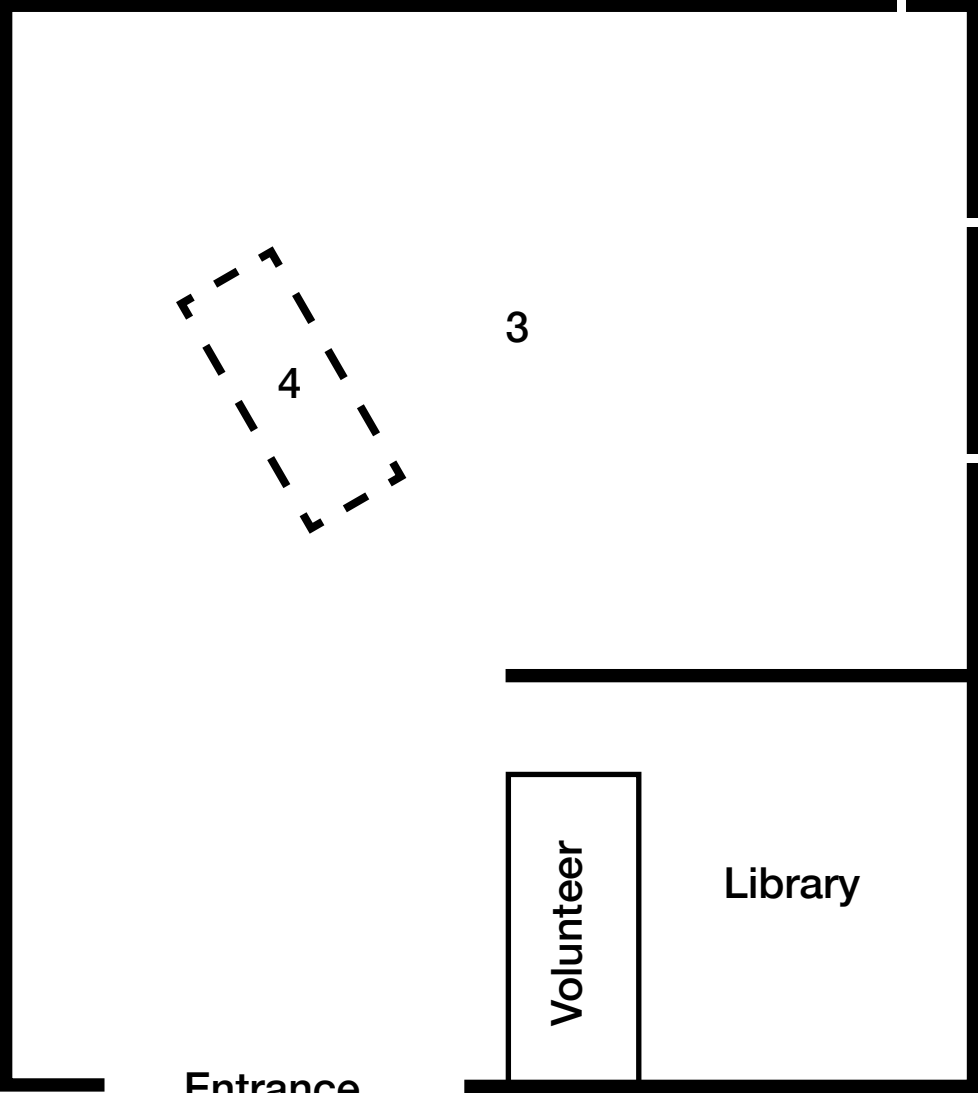
- 3 Daniel Shaskey
Prelude
2020

- 4 Vinyl on floor

Daniel Shaskey
System to System
2019-2020
Digitally printed take home publication and timber kiosk



1



Entrance

Volunteer

Library

3

2

4

